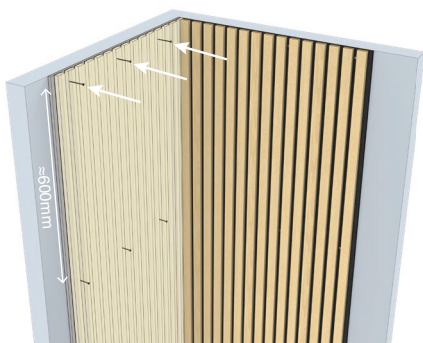
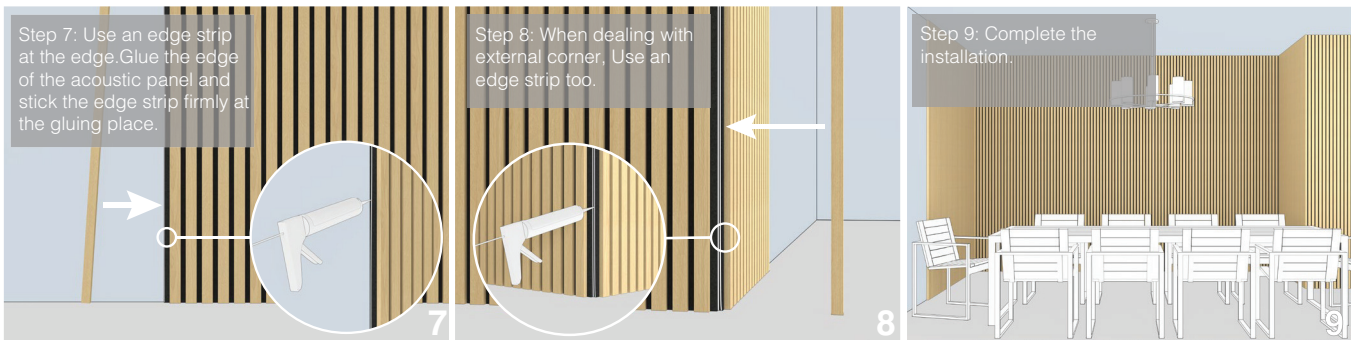
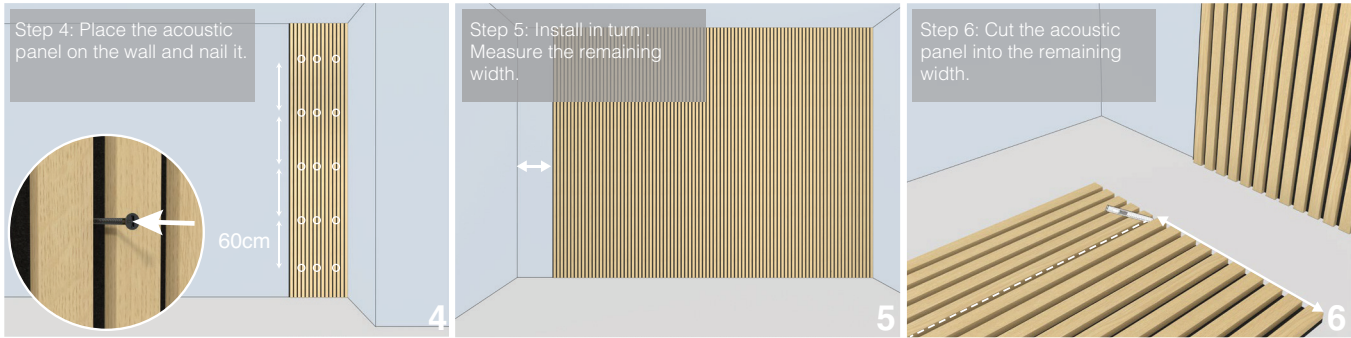
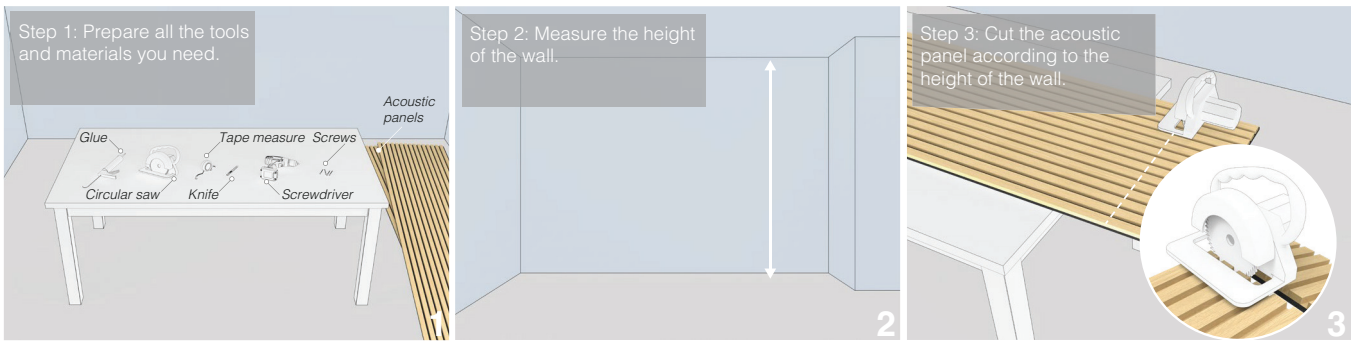




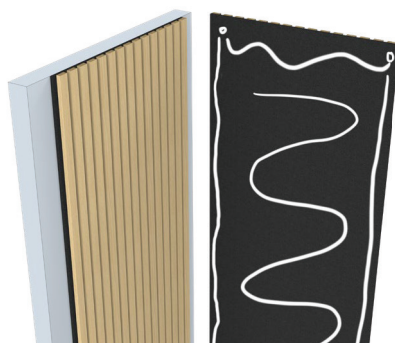
THE URBAN *Collective*

Acoustic
Panels

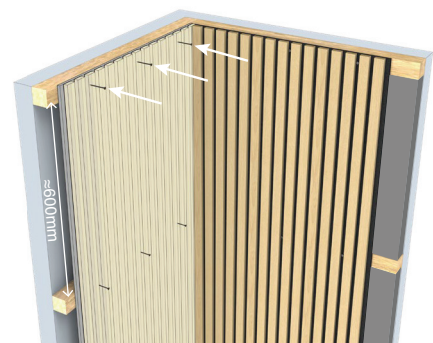
NATURAL AMBIANCE FOR THE HOME



a. Nail acoustic panels directly to the wall.
absorption class: D



b. Attach acoustic panels to the wall with nail-free glue.
absorption class: D



c. Install fibreglass wool or rock wool between the battens.
absorption class: A